

PED Ag

Porcine Epidemic Diarrhea virus antigen

Porcine epidemic diarrhea virus (PEDV) is a member of the coronavirus group which causes watery diarrhea, dehydration and high mortality in suckling pigs. Porcine Transmissible Gastroenteritis Virus (TGEV) is serologically unrelated with PEDV, but clinically these two virus infections are difficult to differentiate. The PEDV is transmitted by feces from infected pigs after oral ingestion. Current available laboratory diagnosis for PED is a cryostat section - direct immunofluorescence assay of the small intestine or colon. ELISA and RT-PCR assays to detect viral antigens in feces or intestinal contents are useful, but require specialized instruments and laboratory personnel. The Anigen Rapid PED Ag test kit has been developed to provide fast and reliable test results of PED antigen in field conditions.



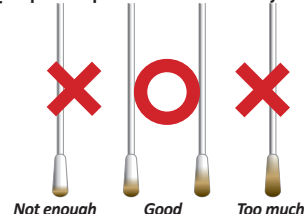
Indications

- Differential diagnosis of swine diarrheal disease
- PEDV field monitoring
- Tentative diagnosis for swift control in outbreak suspected situation

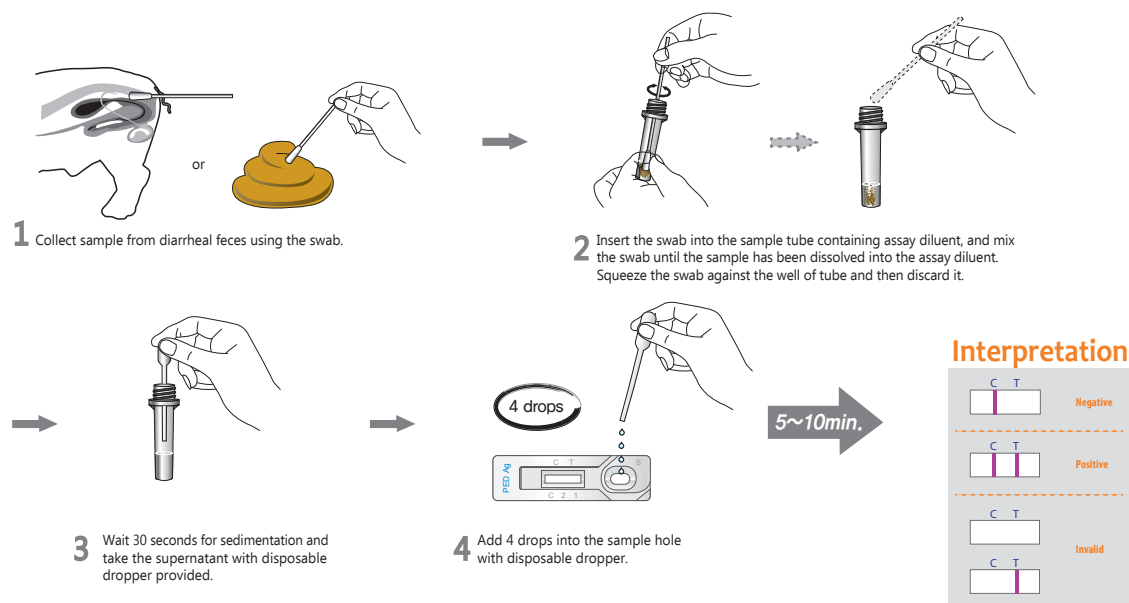
Specifications

- No cross reaction with other etiologic agents
- World's first & sole PED virus antigen rapid test kit
- Specimen : Diarrheal feces
- Sensitivity: 92% vs. RT-PCR
- Specificity: 98% vs. RT-PCR

[Proper sample amount collected by a swab]



Test Procedures



Ordering Information

Cat. No.	Description	Type	Packing size
RG14-01DD	Rapid PED Ag	Device	1 Test x 10/Kit
RG14-05DD	Rapid PED/Rota Ag	Dual Device	1 Test x 10/Kit